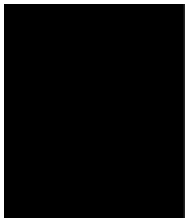


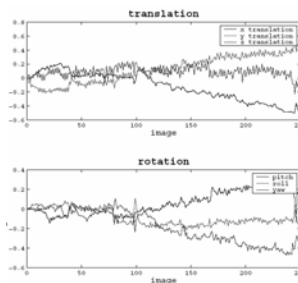
Summary

- Physiological artifacts
 - Filtering
 - Iterative subtraction movie (i1-i2; i2-i3...)



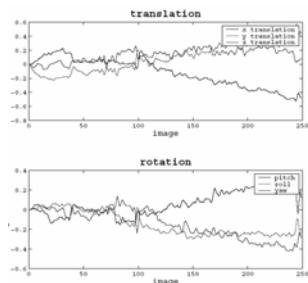
Summary

- Physiological artifacts
 - Filtering



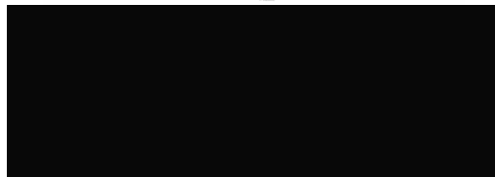
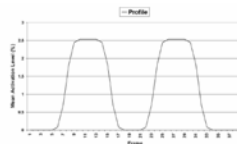
Summary

- Physiological artifacts
 - Filtering

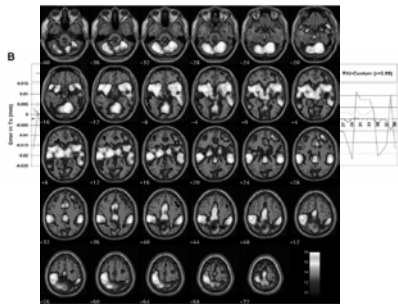


Can BOLD activity be 'estimated' as motion?

A

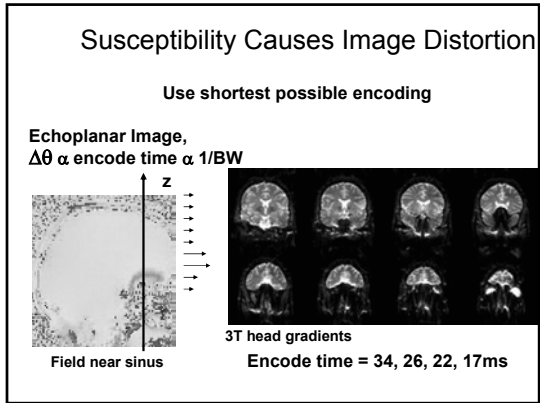
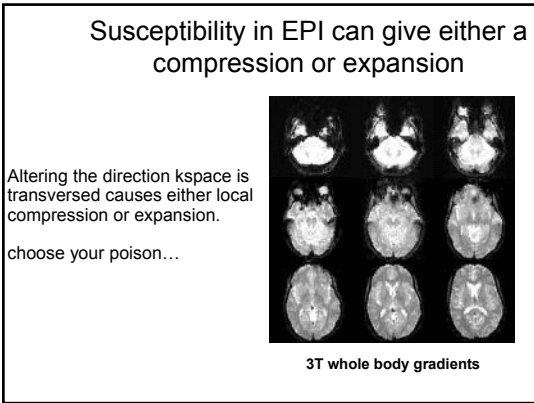
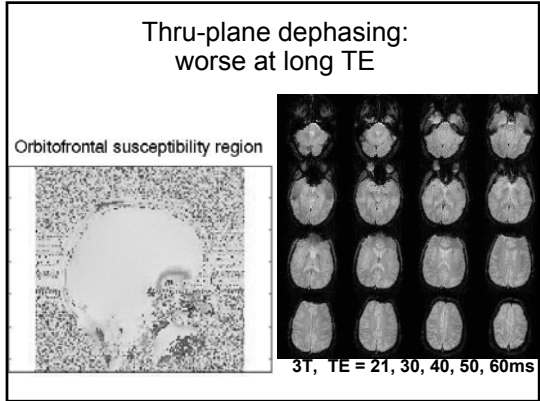
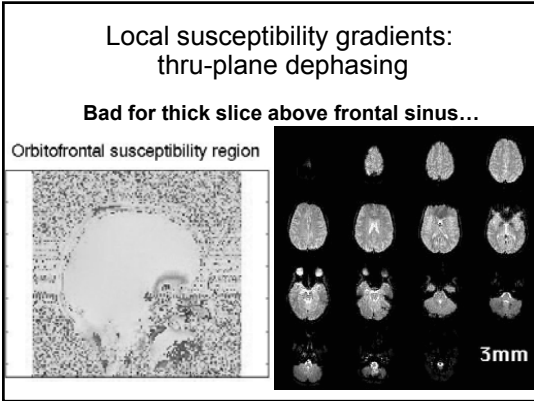
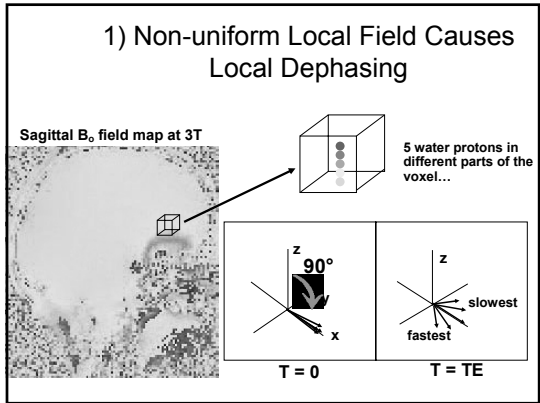
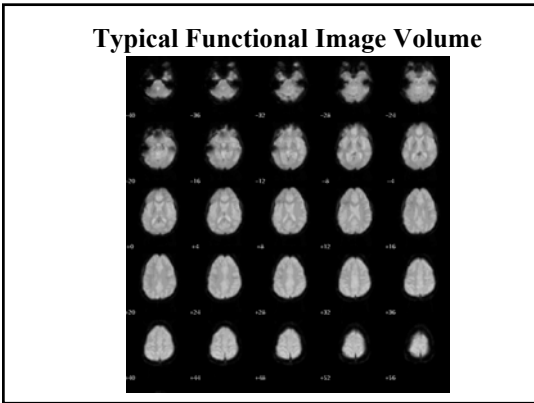


Can BOLD activity be 'estimated' as motion? YES. In some circumstances



References

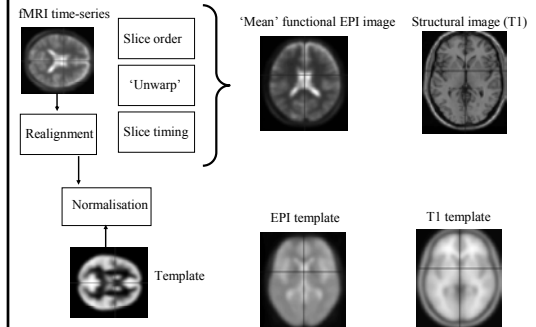
- L. Freire, A. Roche and J.-Fr. Mangin. *What is the best similarity measure for motion correction in fMRI?* **IEEE Transactions in Medical Imaging** 21, p. 470-484, 2002.
- L. Freire and J.-F. Mangin. *Motion correction algorithms may create spurious brain activations in the absence of subject motion.* **Neuroimage** 14(3), p. 709-722, september 2001.
- P.J. Rousseeuw and A.M. Leroy. **Robust Regression and Outlier Detection.** Wiley Series in Probability and Mathematical Statistics. 1987.



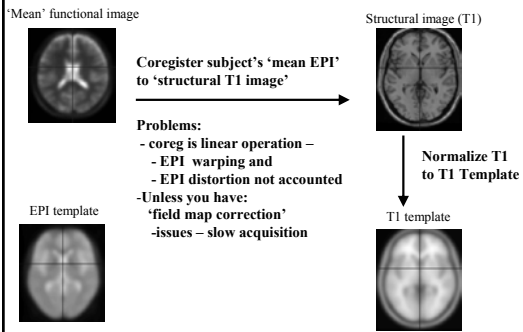
Talairach space

- Revised in spm96 using MNI brain
 - Montreal Neurological Institute
 - Based on 304 normal subjects
 - More representative of population
 - 10-15% larger than Talairach space
- Much confusion in the literature
 - Must convert to 'Talairach' to 'MNI' space
 - Meta-analyses
 - Planning studies, regions of interest
 - Different groups/software use different methods
 - Manuscripts must specify the 'actual space' used

Spatial Normalization



Spatial Normalization



Spatial Normalization

