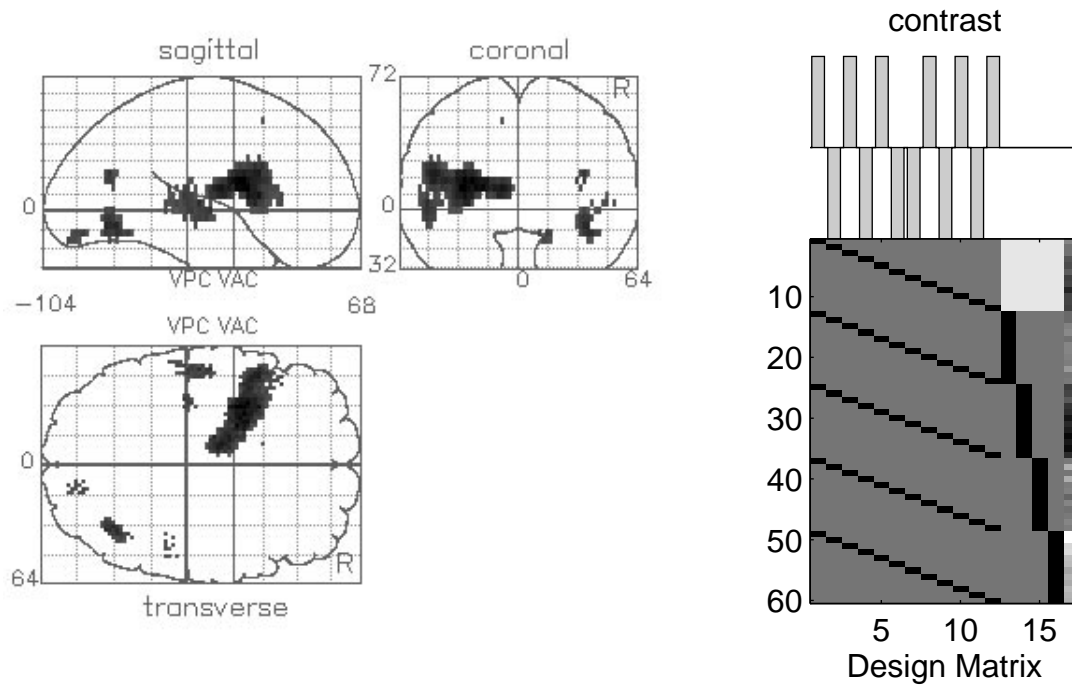


SPM{Z}



A factorial analysis

region {x,y,x mm}	size {n}	Zmax	$P(n_{\max} > n)$	$P(Z_{\max} > Z)$
-26 4 16	549	3.76	0.085	0.267

Threshold = 2.40 Volume = 69142 and FWHM = [15.97 18.97 19.33] mm and df = 43

Figure 7