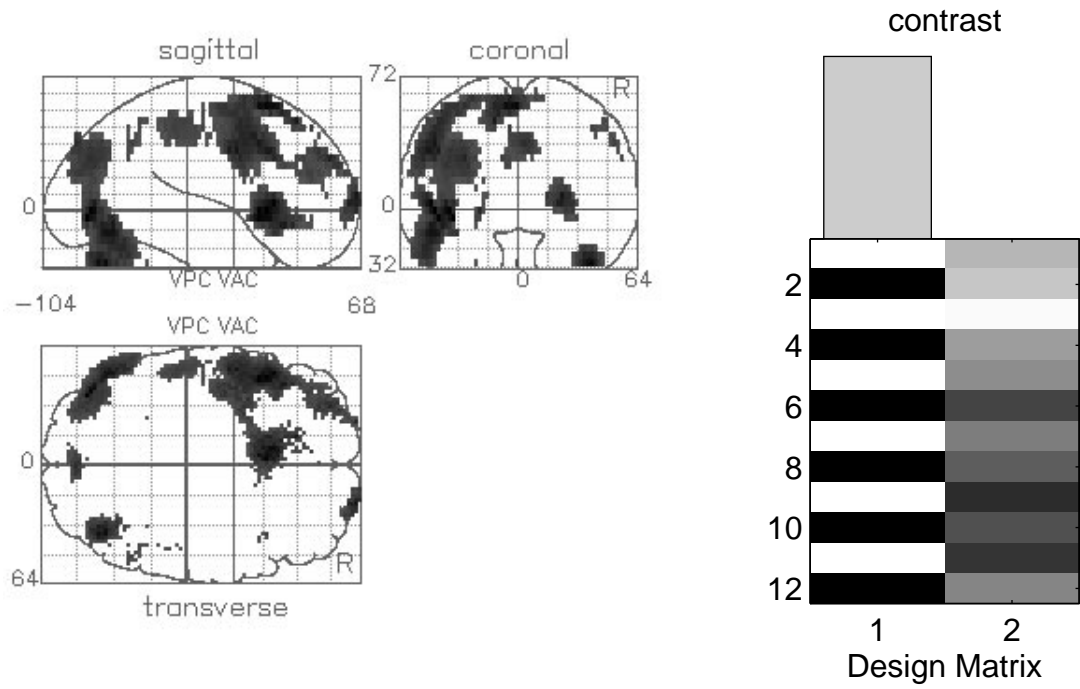


# SPM{Z}



## Single subject analysis

region {x,y,x mm}	size {n}	Zmax	P(n <sub>max</sub> > n)	P(Z <sub>max</sub> > Z)
-36 -80 -4	722	5.54	0.000	0.000
-46 16 0	245	5.42	0.001	0.000
-2 16 56	668	5.20	0.000	0.001
38 -70 -28	124	5.13	0.012	0.001
22 64 8	82	4.91	0.030	0.004
-30 50 28	136	4.63	0.009	0.014
-22 64 0	16	4.58	0.192	0.016
2 -86 36	63	4.48	0.048	0.025

Threshold = 3.60 Volume = 78217 and smoothness = [3.05 3.71 2.16] voxels and df = 10

Figure 1