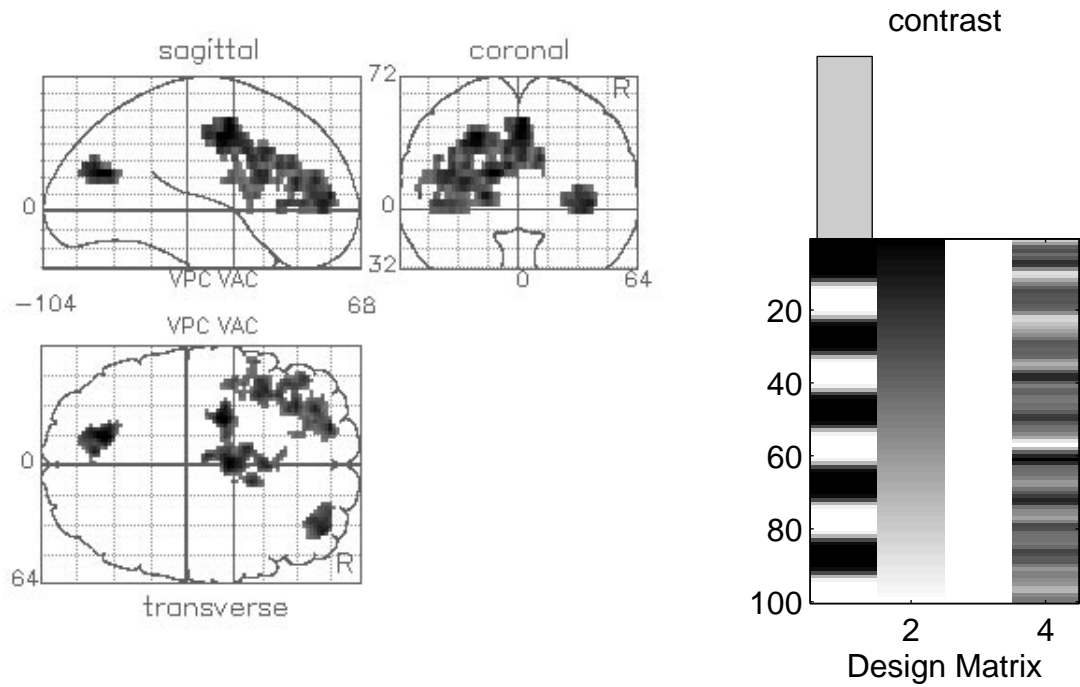


# SPM{Z}



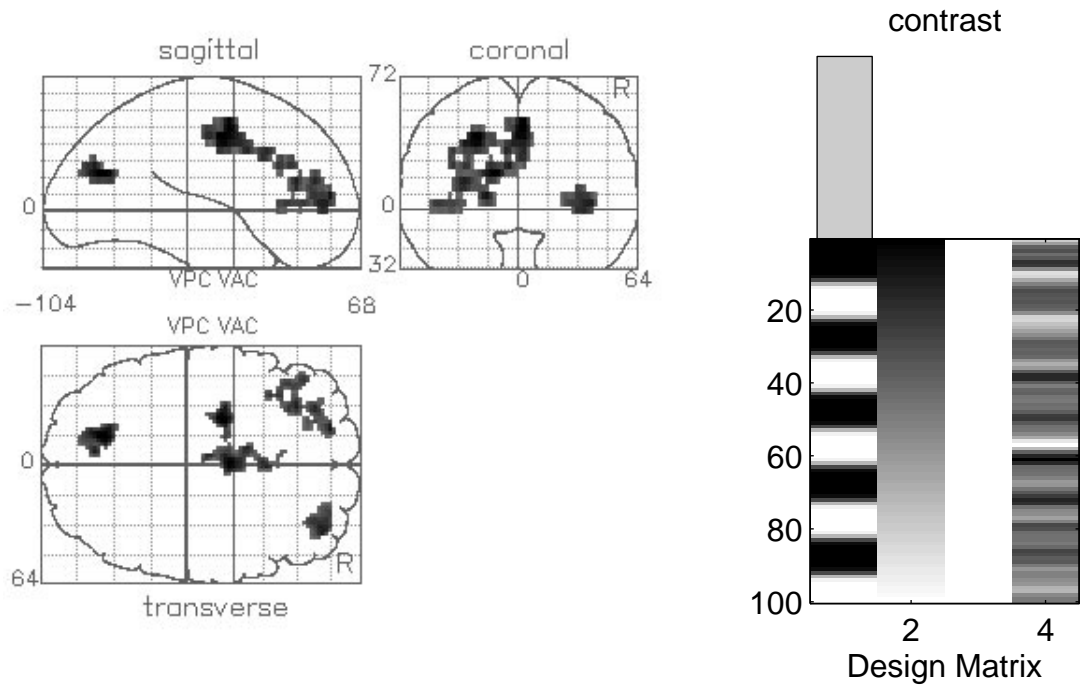
original estimators – 4mm smoothing

region	size {k}	$P(n_{\max} > k)$	Z	$P(Z_{\max} > u)$ (Uncorrected)	{x,y,z mm}
1	154	0.013	4.76	0.034 (0.000)	-14 -72 20
			4.12	0.438 (0.000)	-6 -76 24
2	470	0.000	4.72	0.040 (0.000)	2 -4 44
			4.67	0.049 (0.000)	-24 -6 40
			3.98	0.711 (0.000)	-8 6 32
3	596	0.000	4.31	0.214 (0.000)	-18 50 8
			4.07	0.525 (0.000)	-30 32 16
			3.95	0.800 (0.000)	-30 42 16
4	121	0.044	4.09	0.484 (0.000)	36 46 4

Threshold = 2.33; Volume [S] = 40116 voxels; df = 41

FWHM = [8.3 8.1 8.9] mm (i.e. 1071 RESELS)

# SPM{Z}



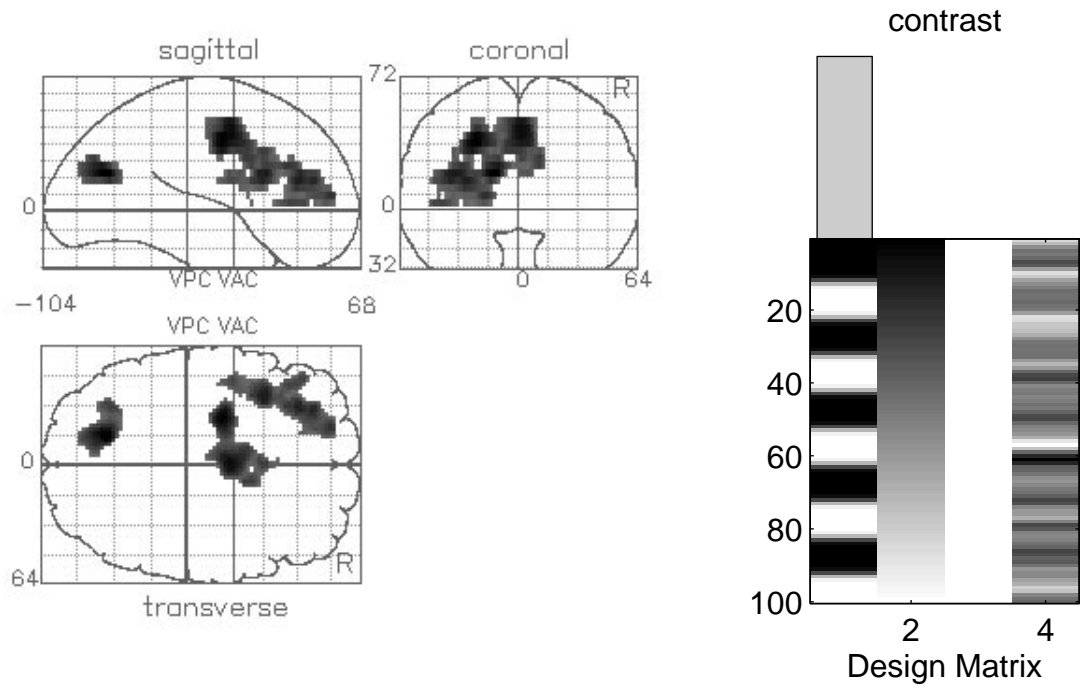
correct estimators – 4mm smoothing

region	size {k}	$P(n_{\max} > k)$	Z	$P(Z_{\max} > u)$ (Uncorrected)	{x,y,z mm}
1	118	0.050	4.18	0.349 (0.000)	-14 -72 20
			3.60	2.496 (0.000)	-6 -76 24
2	217	0.002	4.15	0.390 (0.000)	2 -4 44
			3.48	3.603 (0.000)	-8 6 32
			3.46	3.752 (0.000)	2 16 32
3	101	0.095	4.10	0.462 (0.000)	-24 -6 40
			2.99	12.732 (0.001)	-14 -6 36
4	243	0.001	3.77	1.444 (0.000)	-18 50 8
			3.55	2.865 (0.000)	-30 32 16
			3.44	3.937 (0.000)	-30 42 16
5	100	0.099	3.57	2.692 (0.000)	36 46 4

Threshold = 2.33; Volume [S] = 40116 voxels; df = 39

FWHM = [8.3 8.1 8.9] mm (i.e. 1069 RESELS)

# SPM{Z}



8mm smoothing

---

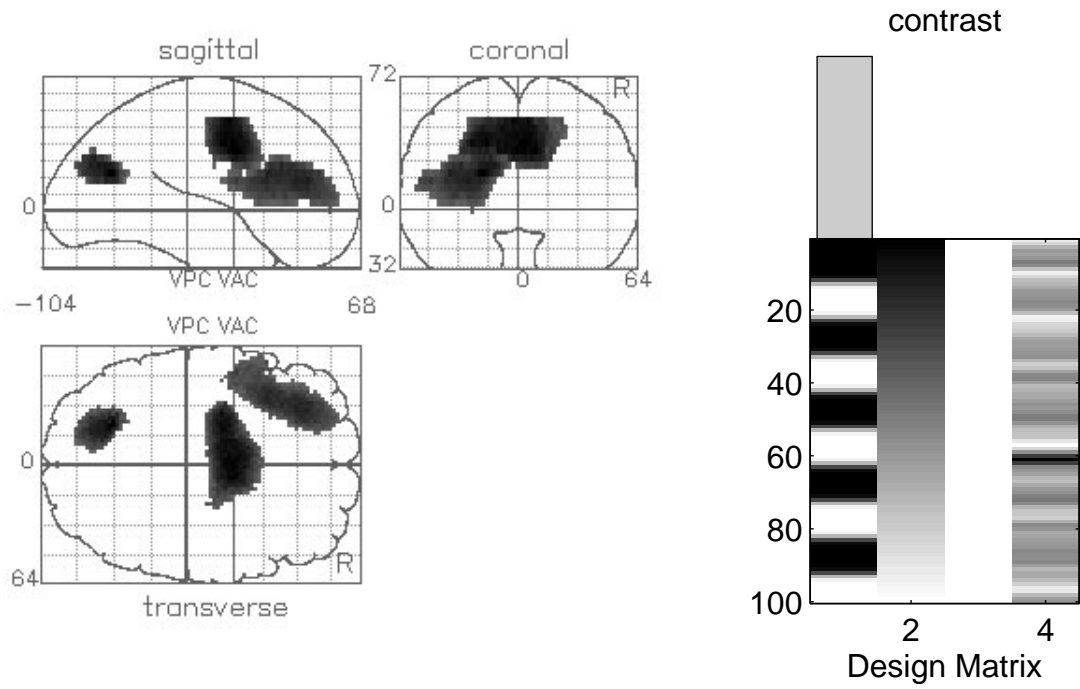
region	size {k}	$P(n_{\max} > k)$	Z	$P(Z_{\max} > u)$ (Uncorrected)	{x,y,z mm}
<b>1</b>	<b>232</b>	<b>0.106</b>	<b>4.22</b>	<b>0.097</b> (0.000)	<b>-14 -70 20</b>
			3.15	2.742 (0.001)	-30 -68 20
<b>2</b>	<b>654</b>	<b>0.001</b>	<b>4.08</b>	<b>0.160</b> (0.000)	<b>-24 -8 36</b>
			3.91	0.292 (0.000)	0 -2 44
			3.15	2.737 (0.001)	10 4 28
<b>3</b>	<b>575</b>	<b>0.002</b>	<b>3.68</b>	<b>0.607</b> (0.000)	<b>-36 16 20</b>
			3.59	0.812 (0.000)	-28 34 16
			3.35	1.629 (0.000)	-18 50 8

---

Threshold = 2.33; Volume [S] = 41178 voxels; df = 39

FWHM = [12.6 12.6 12.4] mm (i.e. 337 RESELS)

# SPM{Z}



16mm smoothing

region	size {k}	$P(n_{\max} > k)$	Z	$P(Z_{\max} > u)$ (Uncorrected)	{x,y,z mm}
<b>1</b>	<b>316</b>	<b>0.274</b>	<b>3.97</b>	<b>0.080</b> (0.000)	<b>-20 -66 20</b>
			3.53	0.332 (0.000)	-18 -74 24
			3.14	0.964 (0.001)	-24 -78 28
<b>2</b>	<b>1345</b>	<b>0.004</b>	<b>3.93</b>	<b>0.092</b> (0.000)	<b>0 -2 36</b>
			3.90	0.102 (0.000)	8 -2 32
			3.80	0.141 (0.000)	-18 -8 36
<b>3</b>	<b>1081</b>	<b>0.010</b>	<b>3.42</b>	<b>0.457</b> (0.000)	<b>-28 38 16</b>
			3.40	0.480 (0.000)	-38 18 20
			3.30	0.639 (0.000)	-32 24 24

Threshold = 2.33; Volume [S] = 45485 voxels; df = 39

FWHM = [18.6 18.9 18.1] mm (i.e. 115 RESELS)